



# Meet the new face of performance

Tissue Cassettes from EpreDia

**The entire range of cassettes from EpreDia™ has been redesigned for better performance – from printing through laboratory processes to archiving**

## **Printing**

- The all-new surface finish and reinforced print faces are engineered to optimize print quality when used with PrintMate™ AS cassette printers from EpreDia
- All-new PrintMate AS-compatible tubes are precisely engineered to reduce jamming and prevent downtime

## **Grossing, Embedding and Processing**

- Opening and closing forces have been carefully adjusted for ease of use, while safeguarding valuable specimens during processing
- Design and flow characteristics tested to ensure efficient processing

## **Sectioning**

- The new cassettes are precision engineered for a solid connection to EpreDia microtomes





## The mark of performance

It's easy to identify cassettes designed for performance. Just look for the unique PrintMate Certified icon on the tab.





**PrintMate Slotted  
Cassette from Epredia**

- Pore style: Slotted
- For routine specimens
- Lid hinge: Reversible

**B851090** □□ 1,000 cassettes,  
loose, with loose-packed lids

**B851120** □□ 750 cassettes  
10 tubes of 75 cassettes,  
with loose-packed lids

**Thinline  
Slotted Cassette**

- Pore style: Slotted
- For routine specimens
- Lid hinge: Front edge

**B851736** □□ 750 cassettes  
10 tubes of 75 cassettes, with  
color-matched, attached lids



**PrintMate Biopsy  
Cassette from Epredia**

- Pore style: Small squares
- For biopsy specimens
- Lid hinge: Reversible

**B851080** □□ 1,000 cassettes,  
loose, with loose-packed lids

**B851110** □□ 750 cassettes  
10 tubes of 75 cassettes,  
with loose-packed lids

**Thinline  
Biopsy Cassette**

- Pore style: Small square
- For biopsy specimens
- Lid hinge: Front edge

**B851737** □□ 750 cassettes  
10 tubes of 75 cassettes, with  
color-matched, attached lids



**PrintMate Embedding  
Cassette from Epredia**

- Pore style: Round holes
- For routine specimens
- Lid hinge: Reversible

**B851040** □□ 1,000 cassettes, loose,  
with no lids – for use with metal lids

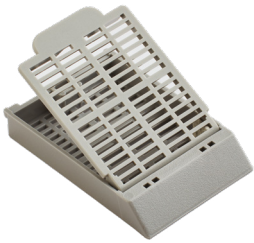
**B851010** □□ 750 cassettes, 10 tubes of 75  
cassettes, with no lids – for use with metal lids

**B851070** □□ 1,000 cassettes,  
loose, with loose-packed lids

**B851100** □□ 750 cassettes, 10 tubes  
of 75 cassettes, with loose-packed lids

**1001003** Metal lids for cassettes





### Slotted Cassette 2

- Pore style: Slotted
- For routine specimens
- Lid hinge: Front edge

**B851739** □□ 1,000 cassettes, loose, with loose-packed lids

**B851729** □□ 750 cassettes, 10 tubes of 75 cassettes, with loose-packed lids



### TissueLoc™ Cassette (Cassette IV) from EpreDia

- Pore style: Slotted
- For routine specimens
- Lid hinge: Back edge
- Large tab for easy opening

**B851954** □□ 1,000 cassettes, loose, with loose-packed lids

**B851720** □□ 750 cassettes, 10 tubes of 75 cassettes, with loose-packed lids



### HistoScreen™ Cassette from EpreDia

- Pore style: Mesh
- For very small biopsy specimens
- Eliminates need for sponges or bags
- Lid hinge: Back edge

**B851000** □□ 1,000 cassettes, loose, with loose-packed lids

**B851001** □□ 750 cassettes, 10 tubes of 75 cassettes, with loose-packed lids



### Biopsy Cassette 2

- Pore style: Small square
- For biopsy specimens
- Lid hinge: Front edge

**B851738** □□ 1,000 cassettes, loose, with loose-packed lids

**B851730** □□ 750 cassettes, 10 tubes of 75 cassettes, with loose-packed lids

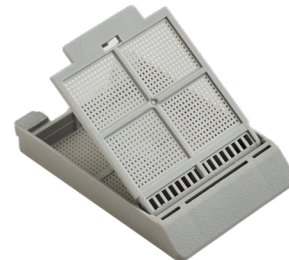


### TissueLoc™ Biopsy Cassette (Cassette IV) from EpreDia

- Pore style: Small square
- For biopsy specimens
- Lid hinge: Back edge
- Large tab for easy opening

**B851925** □□ 1,000 cassettes, loose, with loose-packed lids

**B851750** □□ 750 cassettes, 10 tubes of 75 cassettes, with loose-packed lids



### Fine Pore Cassette

- Pore style: Small holes
- For very small biopsy specimens
- Lid hinge: Front edge

**B851735** □□ 1,000 cassettes, loose, with color-matched, attached lids

**B851734** □□ 750 cassettes, 10 tubes of 75 cassettes, with color-matched, attached lids

## Ordering is easy.

Simply select your cassette and configuration number above, add the two digit color code from below.

*Example: Light Green TissueLoc Biopsy Cassette in Tubes = B851925LG*



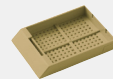
**WH**  
White



**GY**  
Grey



**TN**  
Tan



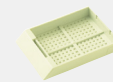
**BE**  
Beige



**YW**  
Yellow



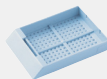
**GN**  
Green



**LG**  
Light Green



**LA**  
Lavender



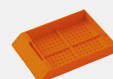
**BL**  
Blue



**LI**  
Lilac



**PK**  
Pink



**OR**  
Orange



## PrintMate AS on-demand cassette printer

Our cassettes are precisely engineered for optimal performance when paired with the PrintMate™ AS cassette printer from EpreDia.

Eliminate waste and streamline your labeling process by printing cassettes on-demand with the PrintMate AS at the grossing station.

- Save time – prints each cassette in ten seconds or less
- Print only the cassettes you need, right at the point of use
- Print barcodes on cassettes to automate downstream processes
- Eliminate errors endemic to handwritten processes
- Suitable for both on-demand and batch printing
- Optional collection system for efficient and organized batch printing
- Free your workspace, the PrintMate printer's compact footprint fits easily and integrates into your laboratory's workflow



Distributed by Fisher Scientific. Contact us today:

**Austria:** fishersci.at **Belgium:** fishersci.be **Denmark:** fishersci.dk  
**Germany:** fishersci.de **Ireland:** fishersci.ie **Italy:** fishersci.it  
**Finland:** fishersci.fi **France:** fishersci.fr **Netherlands:** fishersci.nl  
**Norway:** fishersci.no **Portugal:** fishersci.pt **Spain:** fishersci.es  
**Sweden:** fishersci.se **Switzerland:** fishersci.ch **UK:** fishersci.co.uk

© 2023 Thermo Fisher Scientific Inc. All rights reserved.  
Trademarks used are owned as indicated at fishersci.com/trademarks.

 **fisher scientific**  
part of Thermo Fisher Scientific